

Marine Construction : Seawalls, Retaining Walls, Shoreline Restoration

Whether your project is typical and straightforward or complex and technical; we are experienced in all aspects of Marine Construction. We will help with all phases of your project - including consultation, design, permits, service and installation.

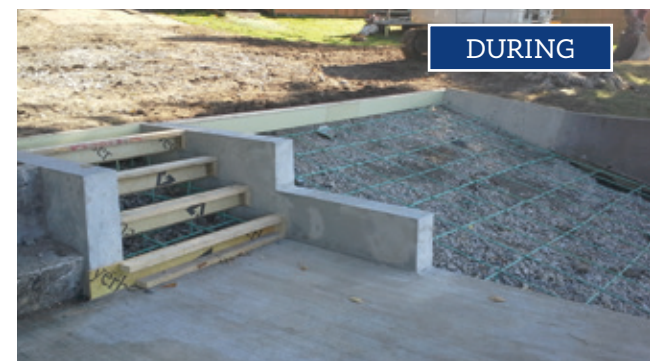
Kehoe Conservation Camp
Lake Bomoseen, VT

Above: Shoreline stabilization and our seasonal steel truss leg docks system.

Below: 100' long concrete seawall and patio repair, including new concrete boat ramp and stairs.

- Concrete retaining & seawalls
- Stacked decorative concrete retaining walls
- Concrete wall recapping/refacing
- Concrete dock recap and/or reface
- Rip rap shoreline erosion control
- Sectional barge service

Our sectional barge allows us to move equipment and materials to sites with no land access.





COMPLETED

Seawall restoration project.

*The Dock Doctors team did a phenomenal job and we are very pleased at the result and value. Once you actually watch the 2-3 week process of building forms, anchoring properly into the wall and footing, and tending to all the little details...it becomes clear that the lowest bidder approach is not a sound strategy. It was a pleasure to watch **The Dock Doctors** team and their exceptional expertise work through the process. It was quite a show!" - C&S Ballister, Lake Bomoseen*



BEFORE



DURING

photos by S. Ballister



Old Forge, NY

Above: Rip rap shoreline restoration.

Our sectional barge allows us the ability to move equipment and materials to sites with no land access.



Commercial & Municipal : Commercial Waterfront Construction

We are experienced with all phases of commercial waterfront construction. We offer on-site consultations and conceptual layouts. We will help you with all aspects of your project from consultation, design & permits, to service and installation. Please contact us today to start planning your project.



Rogers Memorial Park
Bolton Landing, NY



Above: Complete waterfront restoration including pier replacement and new commercial pile docks.

Below: New crib dock as a foundation for the boathouse shown left.



YMCA Camp Chingachgook



Commercial Marina Systems



A Renovated travel lift pit.



B Fuel dock



C Wave attenuator with fingers on shoreward side.



A Aluminum gangway with utility trough & catwalk for travel lift.

Our Experience, Equipment & Services



Specialty equipment to reach sites with little to no shoreline



Pile driving from 4" to 12" in diameter (larger if necessary)



Specialty underwater tooling to install complex permanent underwater structures



We have the experienced staff, the necessary equipment and the specialty tooling to offer a full range of services for all of your waterfront needs.



Four portable workboats ranging from 24' to 40' in length.

