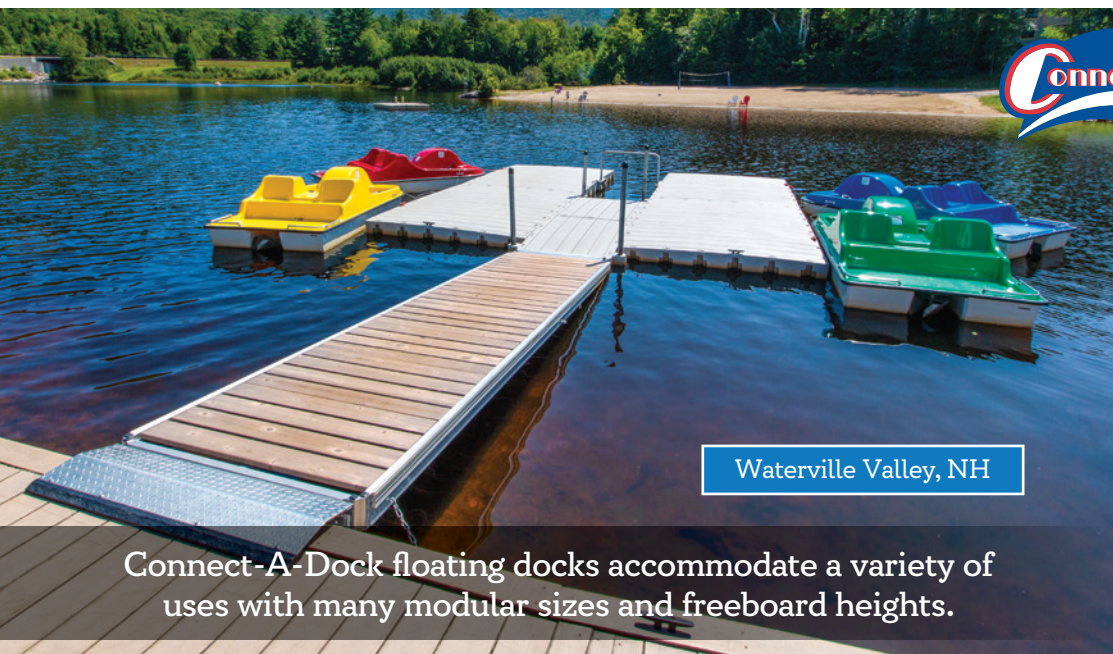


# Floating Docks : Connect-A-Dock

**PRICE INCREASE NOTICE** Since our catalogs were printed in January 2021, material suppliers are implementing 8% - 12% price increases. These increases are in many sectors of the commodity market from steel, aluminum, plastic, vinyl, lumber, and composite materials. We unfortunately can no longer absorb these increases and will need to implement a 5% increase on all stocked products. Prices for "order online" products on our website include the 5% increase. Thank you for your understanding. Read more at: [thedockdoctors.com/covid-updates](https://thedockdoctors.com/covid-updates)



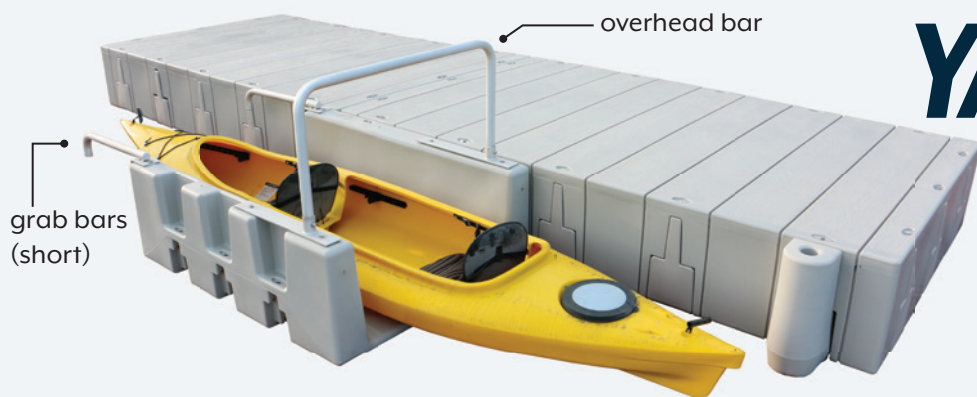
- Wood grain anti-skid surface
- Ultra tough, polyethylene construction
- 1000 Series provides 8" of freeboard
- 2000 Series provides 17" of freeboard



Connect-A-Dock floating docks accommodate a variety of uses with many modular sizes and freeboard heights.

**Above:** "1000 Series" low profile system with Dock Doctors floating dock as a ramp and shore hitch.

**Above:** "2000 Series" higher profile system with Dock Doctors 4' x 16' floating dock with float frame as a ramp and shore hitch.



Shown connected to 2000 series floating dock section.  
**Outside Dimensions:** 48" wide x 60" long x 22" high.  
**Inside Dimensions:** 34" wide x 17" high.  
 Accommodates crafts up to 34" wide. Weight: 99 lbs.

## YAKPORT®

The YAKport launch makes getting in and out of the water easy for beginners or experienced users. The YAKport can be installed to virtually any floating or fixed dock and can be used for kayaks, canoes or stand up paddle boards (SUP) up to 34" wide. Made from highly durable UV protected polyethylene.

**YakPort: \$638 MSRP**

**YakPort Dock Connection Kits:**  
*(additional anchoring may be required)*

Connect-A-Dock 1000 Series.....	<b>\$204</b>
Connect-A-Dock 2000 Series.....	<b>\$172</b>
Fixed Docks.....	<b>\$172</b>
Floating Docks (low profile).....	<b>\$124</b>
Floating Docks (high profile).....	<b>\$195</b>

**YakPort Optional items:**

Overhead assist bars .....	<b>\$159</b>
Yak "grab" bars (long) .....	<b>\$200 each</b>
Yak "grab" bars (short).....	<b>\$110 each</b>

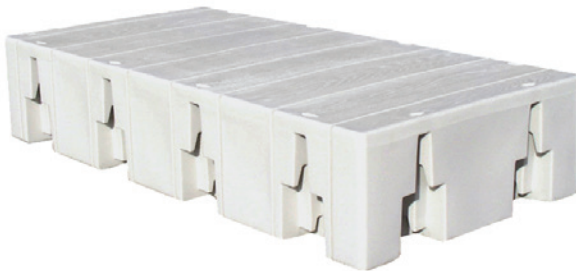


1000 series float section



1000 series corner

see page 3 for details



2000 series float section



2000 series corner



Above Left: YakPort with overhead bar and short grab bars.



Above Right: "2000 Series" higher profile system as an extension to an existing dock.

## Connect-A-Dock Floating Docks

Below is a list and pricing of the most popular sizes - please contact us for a complete list of all Connect-A-Dock® product, anchoring and accessories available.

Series	Model	Weight*	Size	Price Ea
1000	FS1030	50 lbs.	45" × 30" Float Section	\$ 352
1000	FS1060	110 lbs.	45" × 60" Float Section	\$ 700
1000	FS1120	400 lbs.	90" × 120" Float Section	\$2,170
1000	CFS1010	30 lbs.	44" × 33" Corner	\$ 286
1000	FC1020		Float Connector (1000 series)	\$ 47
2000	FS2120	420 lbs.	72" × 120" Float Section	\$2,170
2000	FS2096	230 lbs.	48" × 96" Float Section	\$1,300
2000	CFS2022	75 lbs.	48" × 67" Corner	\$ 466
2000	FS2024	70 lbs.	24" × 48" Float Section	\$ 404
2000	FC2020		Float Connector (2000 series)	\$ 86
1000	PC1010		Pole Connector (for 2" pipe)	\$ 68
2000	PC2022		Pole Connector (for 2" pipe)	\$ 90

# Floating Docks : Connect-A-Dock® Rowing & Paddle Docks

The Dock Doctors are the exclusive distributors of *Connect-A-Dock* products for New England and New York. Please contact us for pricing and details.

Skidmore College, Saratoga Springs, NY



## Applications ideal for Connect-A-Dock products:

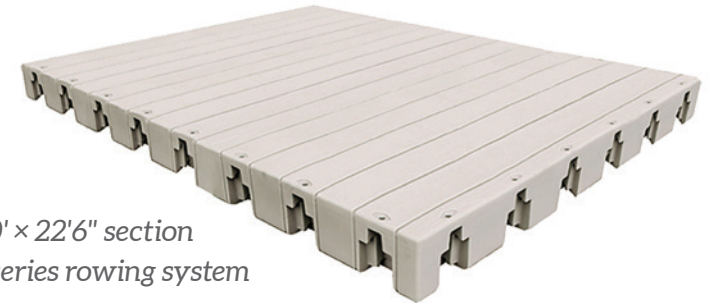
- Rowing / Sculling docks
- Small craft access for canoes & kayaks
- Floating dock slip in calm bodies of water
- Walkway in marsh wetlands





## Connect-A-Dock benefits:

- Modular design
- Easy to install
- UV protected
- Salt water safe
- Environmentally friendly
- Does not contain CCA
- 8 year product warranty



10' x 22'6" section  
1000 series rowing system

**FREE  
DELIVERY**  
see page 3 for details



## Rowing Docks

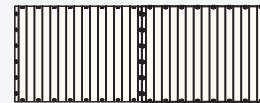


### Standard Size

### Price

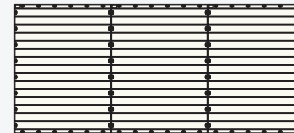
#### 7'6" x 20' 1000 Series Rowing System

starting at **\$4,622\***  
(including connectors)



#### 10' x 22'6" 1000 Series Rowing System

starting at **\$7,262\***  
(including connectors)



**Quantity Discounts Available**

\*Sample pricing does not include any anchoring, ramp to shore, etc.  
Please call for a free estimate.