

Options & Accessories : Decking Choices

Choosing the decking for your new dock system is an important choice, and there are many factors to consider. Maintenance, cost, color and personal style-preferences.



CEDAR is a natural, cost effective decking option that is naturally resistant to decay and insects. We use STK Western Red Cedar (Select Tight Knot Grade or Number 2). It is generally regarded

as a high-quality choice for cedar, and any knots present are sound encased and tight. The wood is generally straight-grained and has a uniform, but rather coarse texture.

CONS: Over time, cedar will absorb moisture and weather to a soft silvery gray, unless sealed with a preserving stain.



ALUMINUM resists the growth of mold and mildew and won't rust, rot, split or stain. This painted then baked beige finish eliminates glare from the aluminum.

The non-slip, rigid, surface is

low-maintenance and cool to the touch. Color is Sherman Williams Beige PHT160052.

CONS: Can sound metallic when walking on it, especially on our docks with removable panels.



WEARDECK is a high density polyethylene resin with UV inhibitors. WearDeck's 5/4" thick deck board is rated to span joists 24" on center with the highest live load capacity in the industry. Rated for ground and underwater contact and will not support mold or mildew growth. This product is 100%

manufactured in Ocala, FL and offers a 25 year commercial



and a lifetime residential warranty.

Cons: Not a natural wood.

Barefoot Collection
"Lighter Colors, Cooler Touch"

Heat-Reflective Technology

- Reflects the sun's hot rays off the surface of the board
- Reduces surface temperature by at least 30% on each color



*please inquire for pricing and lead times.



Ipe Hardwood Decking Upgrade



IPE is extremely hard, very durable and naturally resistant to rot and insects. Ipe's strong, resilient properties make it an excellent material choice for marine applications.

Cons: Due to the density of Ipe, it is heavy and hard to drill and cut, therefore more labor intensive than working with other decking materials. It is also a natural wood, therefore there will be inconsistencies with regard to color, weathering and texture.



SURE-STEP is a slip-resistant, polypropylene surface that allows water and sunlight through to help conserve the underwater ecosystem. Preferred option for dock structures that are situated close to the water so waves will pass

through the decking, adding minimal resistance. Color: Grey.

Cons: Only available in certain dimensions, so may not be a viable option for many applications.

This product **ONLY** available on our Standard Duty Aluminum Leg & Wheel Docks



Our heavy duty aluminum Paddle Dock shown on p. 52-53.



Decorative Option

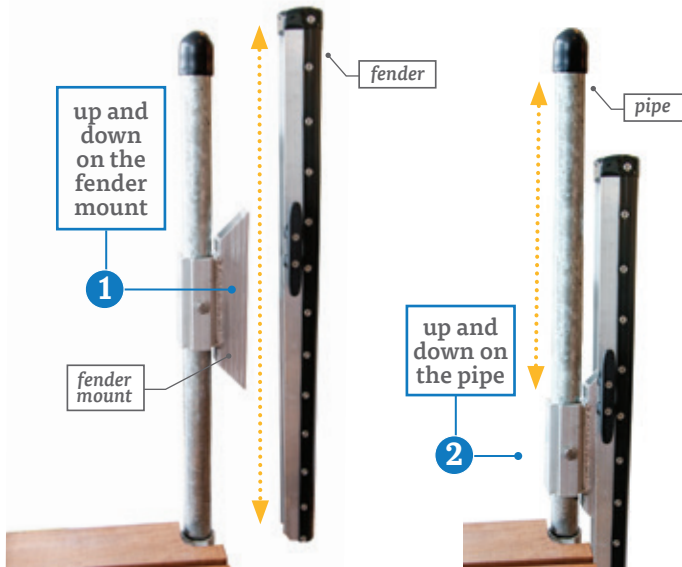
Wooden skirt-boards and cedar post covers are used to camouflage the steel truss frame and leg pipe, providing the appearance of a wooden dock system. Please inquire for pricing and details.



Shipping Available

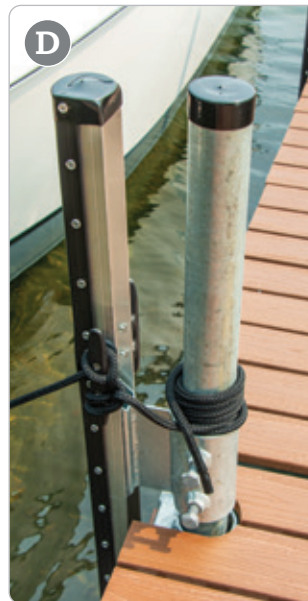
Protect your boat and dock with our adjustable vertical fenders (available for all dock systems)

Our Vertical Fenders offer two forms of adjustment:



Our unique vertical fender design provides a double adjustment both on the fender mount & on the dock support pipe (see diagram above) – which is often necessary due to lake level and boat style. Add a fender cleat kit (see **G** on p. 11) for a complete securing system for your boat.

Our quality vertical fender material provides adequate cushion for protection – but is firm and slick enough to allow the boat gunnel to slide up and down without friction that could cause damage to seasonal docks.



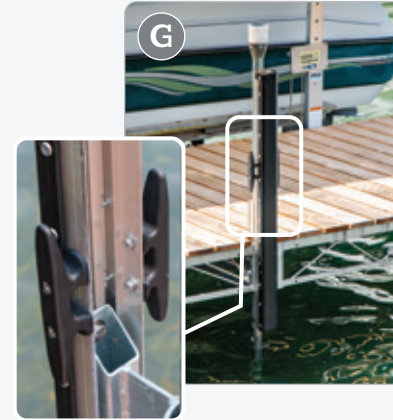
Options & Accessories : Vertical Fenders, Cleats



solar post lites (see p. 16)

A

Vertical Fenders				
Fender Style	Mounting Style	3' long	4' long	
<i>For all Aluminum Leg & Wheel Docks & Steel Truss Leg Docks with 1 1/2" pipe:</i>				
A Fender	1 1/2" pipe mount	\$ 185	\$ 205	
B Double Corner Fender	1 1/2" pipe mount	\$ 335	\$ 390	
<i>For all Steel Truss Wheel Docks with 1 1/2" pipe:</i>				
C Fender with offset	1 1/2" pipe mount	\$ 195	\$ 215	
<i>For all Mega Leg Docks with 3" pipe or Custom Articulating Docks with 2" pipe:</i>				
D Fender	2" or 3" pipe mount	\$ 229	\$ 249	
<i>For all Aluminum "Track-Frame" Floating Docks:</i>				
E Fender	Track Mounted	\$ 205	\$ 225	
<i>For all Aluminum "Track-Frame" Floating Docks - includes spud mount:</i>				
F Fender	Spud Anchor Mounted	\$ 439	\$ 459	



G Fender Cleat Kit

Designed to be used with the 3' or 4' fenders shown on page 10. Includes (2) cleats per kit that bolt onto the fender mount.

\$ 49 per kit

includes 2 cleats and hardware to attach to vertical fender



H Pipe Cleat (for 1 1/2" pipe)

A single cleat mounted to a sleeve that slides over the leg pipe. Available for all leg & wheel docks except the mega leg & wheel docks.

\$ 44 each

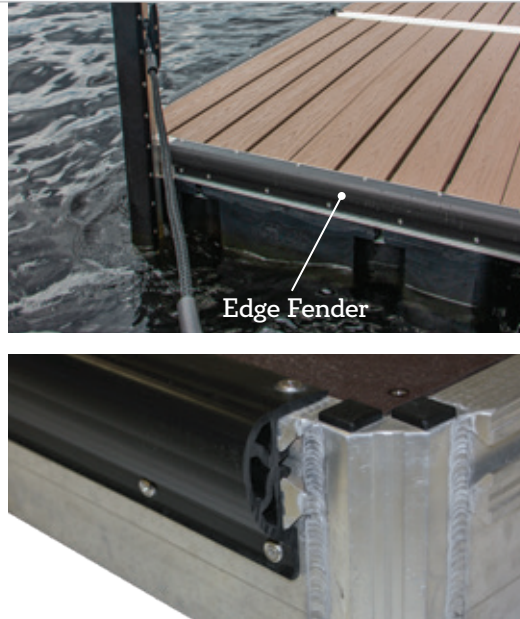


I Track Cleat

Designed to slide along the track of our floating aluminum track dock systems.

\$ 29 each

Options & Accessories : Edge Fender, Mooring Whips



A Edge Fender

An alternative to our vertical fenders, this high quality, non-marring black edge fender can be installed on our Aluminum Leg & Wheel Docks (standard and medium duty), our Aluminum Floating Docks and our Custom Steel Truss Floating Docks.

\$ 9.⁹⁵ per foot

(material only, not installed, not including fasteners)

\$ 13.⁵⁰ per foot

(installed with stainless steel fasteners)*

**installation available on new dock orders only*



B Taylor Made Mooring Whips

Mooring whips with fixed angle base. Two-piece kit, will need to be epoxied (epoxy included with kit). Recommended for low profile boats such as bass boats, runabouts and sport boats.

MW120: **\$ 715** for 18' – 23' boats / 2,500–5,000 lbs.

MW140: **\$ 815** for 24' – 28' boats / 5,000–10,000 lbs.

Disclaimer: Some docking conditions may be too rugged for this product.

C Mooring Whip Dock Mounts (for Dock Doctors docks)

Required for docks with removable decking. **\$ 196**
(for Taylor Made mooring whip models listed above only)



Heavy Duty and Mega Dock Truss Frame Mount



Aluminum Track Frame Mount

Options & Accessories : Dock Mounted Storage Racks

See our full line of Paddle Craft Products on pages 52-67

Dock Mounted Storage (Kayak, Canoe, Paddleboard)

Marine-grade aluminum small craft storage. Arms feature vinyl hull guards and end caps with built-in tie-down openings. Crafts can be secured with a cable and lock (not included).



Shipping Available



A Storage Arms (pair) (single craft, dock mounted)

A pair of storage arms which slide onto the leg pipes of your dock. Arms are 35" in length. *Note: Fits all docks with 1 1/2" pipe*.*

Storage Arms (pair): \$ 215

Designed for 1 1/2" SCH #40 pipe and will work with any pipe that measures 1-15/16" O.D. (outside diameter).



B Storage Rack (2-craft, dock mounted)

Our two-craft storage rack mounts to the frame of your dock and stores two crafts and paddles/oars. Top arm is 35", bottom arm is 18" (wider crafts can be stored at an angle).

Storage Rack (2-craft): \$ 655

Mounts available for all models of Dock Doctors docks, as well as a universal mount for wooden docks.



Options & Accessories : Boat & Paddle Craft Access



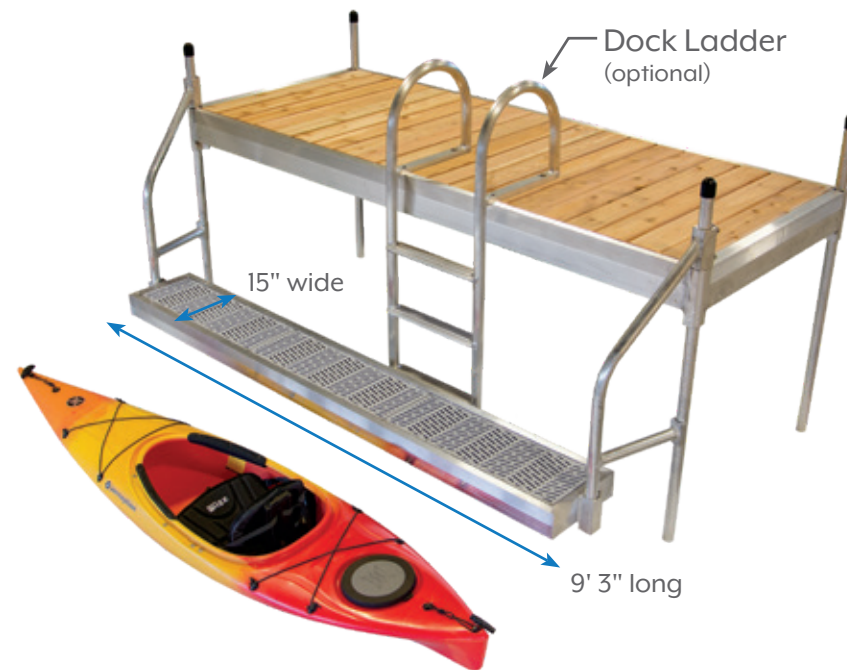
Lower Access Platform : for swimming & kayaking

Stationary leg docks are often quite a distance above the waters' surface, making accessing the water for swimming or kayaking very difficult. Our lower access platform is designed to provide you with a safe transition to the water.

- 5" tall aluminum frame
- Sure-Step® flow-thru, anti-slip decking
- Designed to be used alongside any 8'-10' long dock with 1 ½" support pipes
- Adjustable sleeves slide over 1 ½" support pipes

Lower Access Platform: \$975

add optional ladder (see p. 18)



Options & Accessories : Boat & Paddle Craft Access

A Dock Mounted Roller

A single 12" keel roller designed to assist you when moving canoes, kayaks, or other small crafts on or off your dock.

Dock Mounted Roller: \$ 145

A1 Universal Surface Mount or A2 Track Frame Mount for Dock Doctors Medium Duty Aluminum Floating docks (pages 46 - 51).



Watch a video and find out more at: thedockdoctors.com/kayak-roller

B Boarding Handle

Our marine-grade aluminum boarding handle provides a safe handhold when boarding your boat. Mounts to **Dock Doctors** floating aluminum track dock systems or universal mount to attach to any dock frame. Height from mount to top of handle is 48".

Boarding Handle: \$130

mount sold separately

B1 Universal Mount\$85

B2 Track Mount\$85

for Dock Doctors Medium Duty Aluminum Floating docks (pages 46 - 51).



C Sliding Boarding Step Great for people and pets!

Our sliding boarding step easily slides and retracts so you can safely board your boat from your dock. Securely attaches to your existing dock. Includes a safety handrail that can mount to either side of platform. *See page 69 for full details and specifications.*

Sliding Boarding Step: \$1,155

Options & Accessories : Sea Gull Eliminators & Solar Lights



Solar Lighting options for your dock!
No Wiring Required and easy hassle free mounting.



Solar Dock Post Lites

Super bright LED (12 lumens) last 18+ hours on a full charge. Automatic night activation. Fits standard 1-1/2" and 2" pipes.

- Fully sealed electronic circuit board
- Replaceable 1.2v NiMH battery
- Two (2) post lites in each package

\$ 57
package of 2

Available with white LEDs only



1 3/8" Dock Dots

The smallest solar lights you have ever seen!

Easy to install in minutes with a 1 3/8" drill bit or hole saw.



\$ 56
package of 4

Available with white LEDs only

Deck Lights

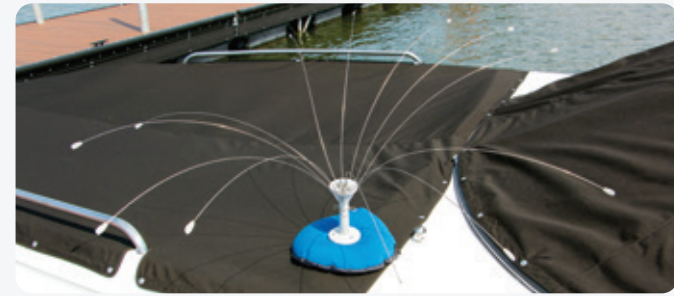
Industrial strength solar powered dock light. Marine grade anodized aluminum offers superior protection in harsh marine environments.

\$ 37
each

Available with white LEDs only



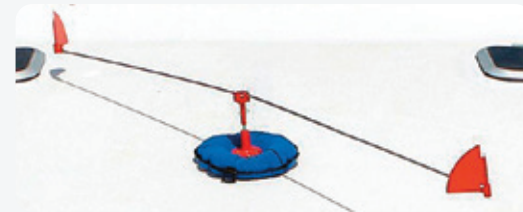
BIRD•B•GONE™ Sea Gull Eliminators



Bird Spider 360°

The spider's spinning motion is effective at deterring birds from landing on your boat, swim raft or dock. Stainless steel arms with scuff-preventing polycarbonate tips move with the breeze. Permanent glue-on base or use optional sandbag mount.

4' Diameter Spider \$ 49.⁹⁹ 8' Diameter Spider \$ 59.⁹⁹



Repeller 360°

6' diameter, wind driven rotator keeps birds from roosting on your boat, swim raft or dock. Includes standard mounting block (screws included). Portable sandbag mounts sold separately.

360 Repellent \$ 49.⁹⁹

Sandbag Base

Attaches directly to either style repeller (hardware included). Eyelets around outer ring for extra security. Weighs 8 lbs.

Sandbag Base \$ 41.⁹⁹



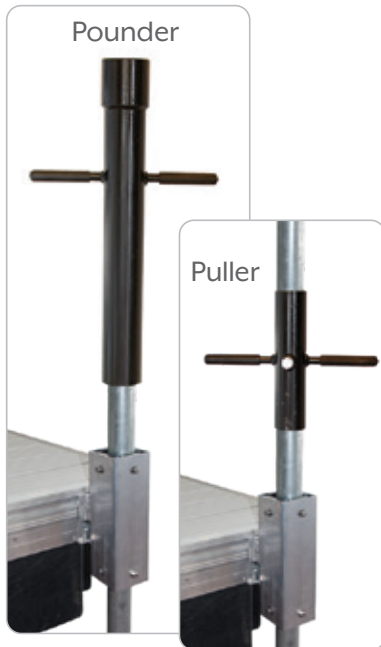
Options & Accessories : Seasonal Dock Adjustment Tools & Flag Poles

Adjustment Kit

Adjust the level of your dock with this kit that slides over the 1 1/2" leg pipe. Available for all leg & wheel docks with 1 1/2" pipe. Sold as a pair (winch with sleeve and hook).

\$ 339 / pair

See page 45 for our Mega Dock adjustment kit.



Spud Puller & Pounder Kit

This (2) piece system aids in the installation and removal of spud pole anchors for our floating dock systems.

2" puller/pounder kit: \$ 345

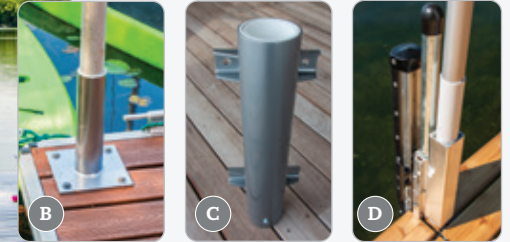
3" puller/pounder kit: \$ 435

16' Aluminum Telescoping Flag Poles

Add beauty to your waterfront property with a telescoping flagpole. Each section of the pole raises and lowers easily, and with no ropes, chains or pulleys they are virtually noise-free.



16' tall telescoping aluminum flagpole includes a 3" gold aluminum ball ornament, a double flag harness to fly two flags or fly at half mast, a 3' x 5' nylon USA flag with embroidered stars and sewn stripes. Other pole heights available as special order.



Flag Poles

Style	Our Price
A1 Silver Finish 16' Flag Pole	\$ 359
A2 Black Finish 16' Flag Pole	\$ 389
Dock Mounts (for flagpoles)	Our Price
B Deck surface mount	\$ 129
C Side mount	\$ 129
D Pole mount for docks with 1 1/2" leg pipe	\$ 109

Options & Accessories : Ladders & Steps



Dock Ladders

(available for all dock systems)

One-piece, removable vertical ladder with 1 1/2" tubular aluminum frame and arched, slip resistant 4" treads for added comfort with bare feet. Treads are 17 1/2" wide.

Stock Size	PRICE
3' ladder	\$ 305
4' ladder	\$ 325
5' ladder	\$ 345



Shallow Water Stairs

(available for all leg & wheel docks)

One-piece welded aluminum structure with aluminum handrails down each side and non-slip treads with adjustable footpads. 19.50" wide treads/29" between rails/8" risers.

Stair Size	Elevation ¹	PRICE
4 step	37" – 49"	\$ 795
5 step	45" – 57"	\$ 845
6 step	53" – 65"	\$ 895

¹Accommodates elevation from dock surface to lakebed.



Also suitable for accessing the shoreline from your dock.



Waterfront Access : Aluminum Stairs

Our lightweight aluminum stair kits are designed for a variety of applications. Offering a lifetime of virtually maintenance free features, these quality aluminum stairs are an economical solution for waterfront or hillside access and ideal solution to replacing your old wooden steps. Not recommended for in-water use.



Aluminum Stair Features

- Readily available in lengths up to 18'
- Non-skid, 28" wide aluminum stair treads
- Rounded aluminum handrails on both sides
- Adjustable rise & run (27 to 44 degrees) to accommodate your site
- Marine grade aluminum extrusions with stainless steel fasteners (not recommended for in water use)
- Lightweight & easy to carry for a two-person installation
- Custom fabrication available for specific applications & lengths (see custom catalog or our website)
- Optional adjustable footpads for base of stairs
- Includes mounting bracket (designed for easy seasonal installation & removal of stairs)

Waterfront Access : Aluminum Stairs

Calculate shipping costs on our website at:

www.thedockdoctors.com/stair-kits

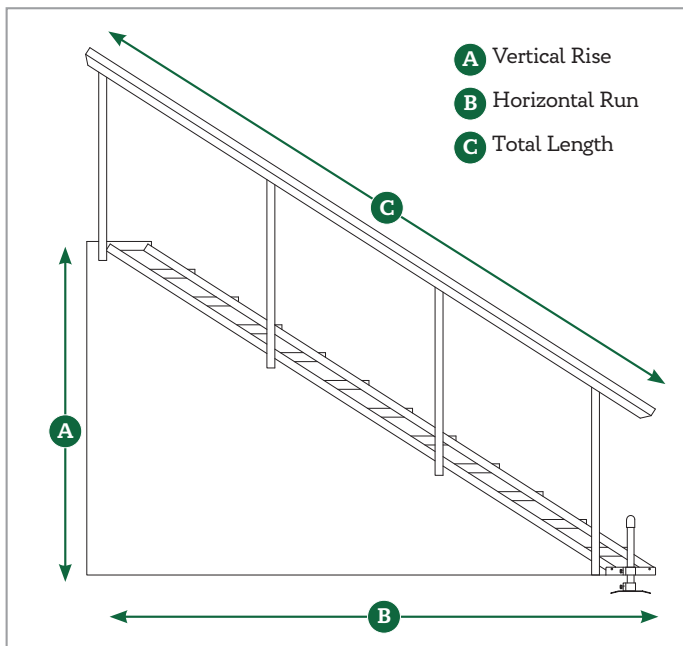


 4 and 6-step stairs ship UPS ground

 8 thru 16-step stairs ship freight



Optional adjustable footpad for uneven surfaces.



How to measure for stairs

A few simple measurements can help determine the recommended length of stairs for your particular site.

For tips on how to measure, visit our website at:

www.thedockdoctors.com/stair-kits

Aluminum Stairs

All stair treads are 28" wide

All stairs can be assembled to fit any distance between the minimum and maximum rise.

# of Steps	Price*	MINIMUM RISE			MAXIMUM RISE			Weight
		Rise @ 6" (27°)	Run with 6" rise	Length with 6" rise	Rise @ 9" (44°)	Run with 9" rise	Length with 9" rise	
4	\$ 955	2' 0"	4' 7"	5' 0"	3' 0"	3' 11"	4' 11"	70 lbs.
6	\$ 1,255	3' 0"	6' 6"	7' 2"	4' 6"	5' 6"	7' 1"	100 lbs.
8	\$ 1,555	4' 0"	8' 5"	9' 4"	6' 0"	7' 1"	9' 3"	122 lbs.
10	\$ 1,855	5' 0"	10' 4"	11' 6"	7' 6"	8' 8"	11' 5"	150 lbs.
12	\$ 2,155	6' 0"	12' 3"	13' 8"	9' 0"	10' 2"	13' 7"	174 lbs.
14	\$ 2,455	7' 0"	14' 2"	15' 10"	10' 6"	11' 9"	15' 9"	202 lbs.
16	\$ 2,755	8' 0"	16' 1"	18' 0"	12' 0"	13' 3"	17' 11"	225 lbs.
n/a	\$ 770	3' x 4' stair platform (standard duty aluminum with aluminum decking)						45 lbs.

*Price includes mounting bracket (fasteners to existing platform not included); handrails down each side and slip resistant stair treads. Stair uprights remain vertical in any rise. Optional top and/or bottom stair platform in 3' x 4' standard duty aluminum. Optional pair of Adjustable Footpads includes brackets to mount to bottom of stairs, 1 1/2" aluminum support pipes 24" long, black safety caps & aluminum footpads. Requires stair frame drilling on-site to mount.



mounting bracket



rounded aluminum handrail



non-skid, 28" wide aluminum stair treads



(optional)
Adjustable Footpad
\$250 / pair

Requires drilling stair on-site to mount.



3' x 4' platform



Assembly Options: Unassembled: Requiring assembly on site to contour to desired rise (note: some drilling is required).

Pre-assembled: Factory assembled and adjusted to desired rise (note: additional assembly charge will apply).

*Prices do not include shipping/delivery. To calculate shipping to your location, please visit: www.thedockdoctors.com/stair-kits