

Pile Docks

*Permanent **pile docks** are custom designed in a variety of configurations and structural frames for both residential and commercial settings. Manufactured with a welded galvanized steel channel frame, these docks offer the aesthetic appearance of a wooden dock with the structural integrity of a steel frame system. A great alternative to crib dock systems as they have less surface area for ice to come in contact with.*



Ticonderoga, NY

Pile Docks

- Ideal for use on bodies of water with limited water fluctuation
- Great alternative to crib dock systems
- Manufactured to support a sundeck and/or boathouse roof
- Custom fabricated in any size, shape & layout
- Heavy duty galvanized steel channel frame and large diameter galvanized pipe used for pile supports
- Variety of decking options & aesthetic options available to camouflage the steel components
- Adjustable pile stanchions built into frame



U-shaped pile dock with Ipe decking – pilings cut below decking.



U-shaped pile dock with a slip divider / catwalk.



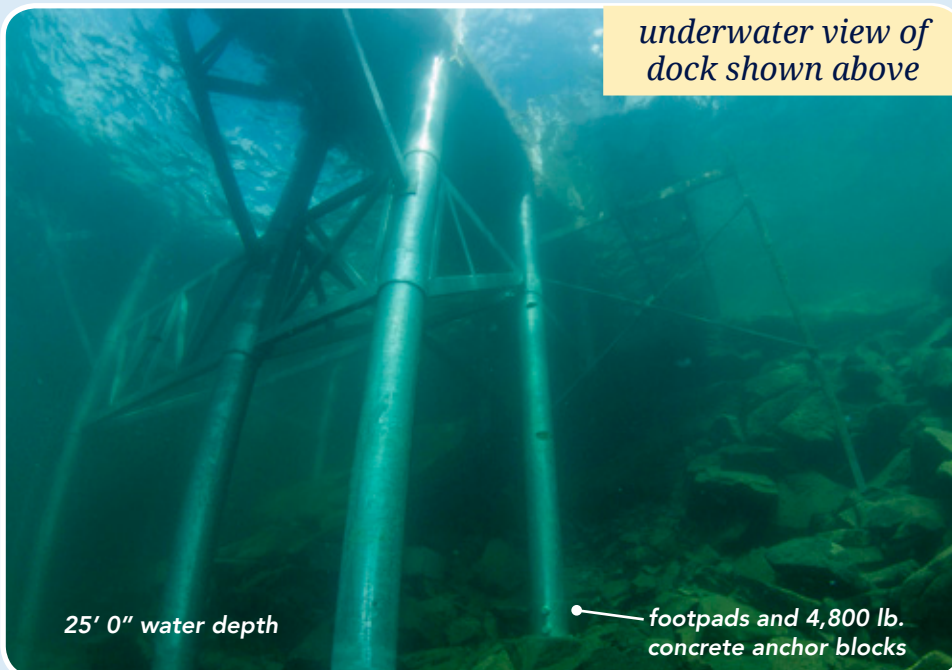
Bolton Landing, NY

We specialize in difficult sites:

Custom pile dock installed in an extremely deep and exposed area of the lake.



U-shaped pile dock with ends that articulate (raise for winter).



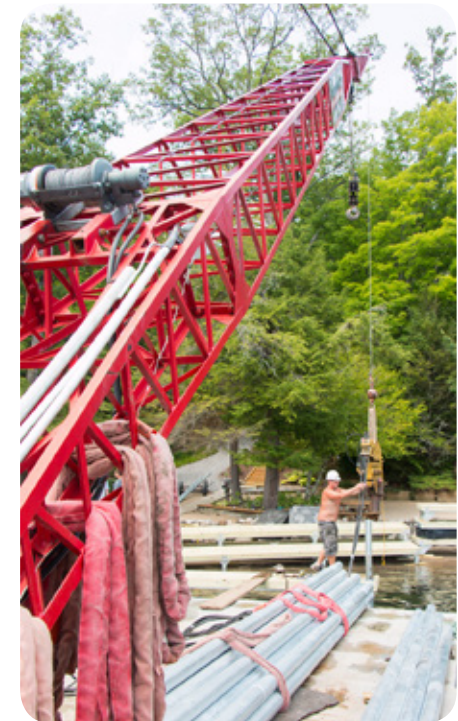
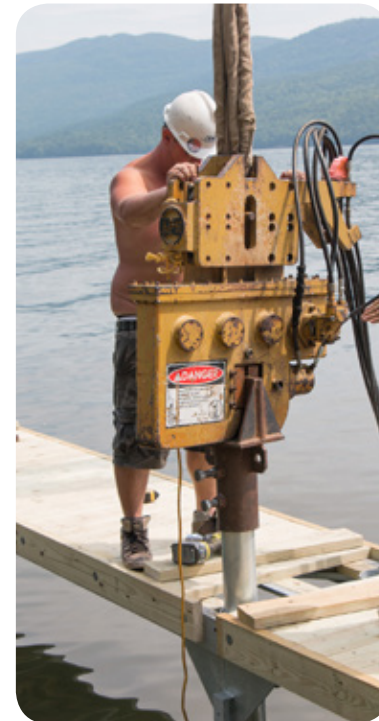
underwater view of dock shown above

25' 0" water depth

footpads and 4,800 lb. concrete anchor blocks



Our work boat "Doc" moving a pile dock section into position.



Piles (to support the dock frame) being driven into the lake bed with our work boat and pile driver.



Upper Saranac Lake, NY

Pile dock with 8" diameter piles on outer supports for protection from ice on exposed side of dock.



Pile dock on a man-made pond.

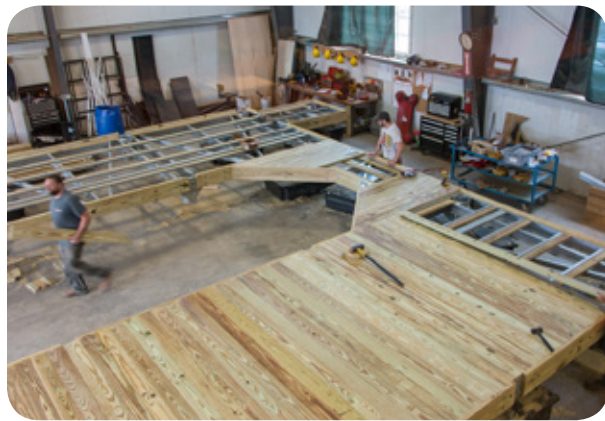


Lake George, NY

★ ★ ★
DESIGN
Manufacture
INSTALL
 ★ ★ ★



Pile dock being manufactured in our 25,000 square foot facility in Ferrisburgh, VT.



Pile dock in final stages during decking installation.



Portable work boats from 25' - 32' in length allow us to provide installation of our products throughout the Northeast